

VIOLA

1. Solo - please prepare a 1 minute selection of a piece of your choice that best demonstrates your playing abilities
2. Excerpts - play all excerpts. **Pay attention to the metronome marks.**
 - a. Coleridge-Taylor: Hiawatha Overture
 - b. Dvorak: Symphony No.8, mvmt. I
 - c. Dvorak: Symphony No.8, mvmt. III

Coleridge-Taylor

457

13

poco rit.

2

a tempo

mp

469

sf

sf

478

cresc.

sf

488

sf

Dvorak, mvmt. I

253



M $\text{♩} = 124$



256



260



264



268

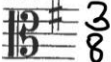


272



Dvorak mvmt. III

133



$\text{♩} = 54$



144



157

